



Contents:

Packaged Terminal
(PTAC)..... 3-11

Vertical Terminal
(VTAC).....12-13

Through-the-Wall
(TTW) 14

Ductfree
(DFS) 15

Dear Valued Customer,

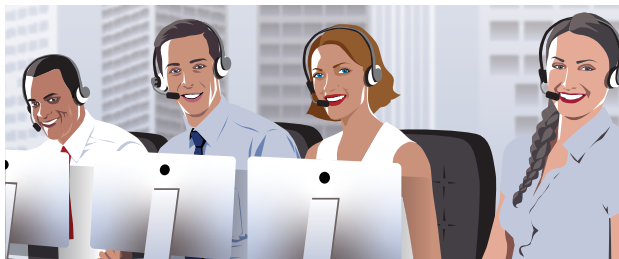
At First America Products, we recognize that you have very specific HVAC requirements, unique to your business. With over 50 years combined experience in the industry, our First America staff of professionals stand ready to assist with your HVAC questions and to ensure your product selections properly address your needs. We are committed to helping your business grow by providing you with quality products and solutions.

We are pleased that you have made First America your premier choice for HVAC products. We are committed to provide you with quality products at great prices and strive to deliver at every opportunity.

Thank you for being a valued customer. We are grateful for the privilege of serving you and your company's needs.

Best regards,

The FIRST AMERICA TEAM



For product information, go to
www.firstamericaproducts.com

For support, call: 800.513.1152
Email: support@firstamericaproducts.com

For sales, fax: 800.760.0715
Email: sales@firstamericaproducts.com

Look for us on Facebook at
facebook.com/FirstAmericaProducts



WALL SLEEVES

First America offers a “full line” of durable high-quality PTAC wall sleeves.

Whatever your project needs, we have you covered.



PART NUMBER / DESCRIPTION	DIMENSIONS (IN.)		
	L	W	H

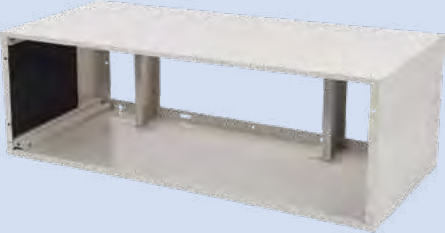
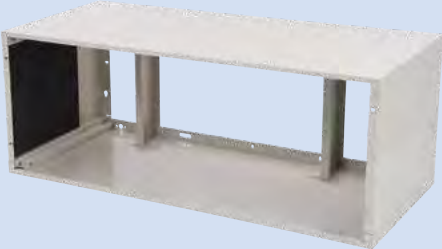

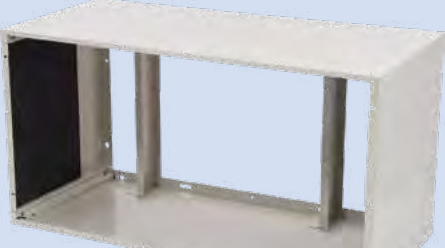
POLYMER STANDARD WALL SLEEVES




	<p>SLEEVE-POLY-A</p> <p>Premium Snap Together Polymer Wall Sleeve with factory installed insulation.</p>	42	14	16
	<p>SLEEVE-POLY-N</p> <p>Premium Snap Together Polymer Wall Sleeve with factory installed insulation.</p>	42	14	16

STEEL WALL SLEEVES

	<p>SLEEVE-STEEL-A</p> <p>Snap Together Heavy Duty Steel Wall Sleeve with factory installed insulation.</p>	42	13-3/4	16
--	-------------------------------------------------------------------------------------------------------------------	----	--------	----

	PART NUMBER / DESCRIPTION	DIMENSIONS (IN.)		
		L	W	H
ALL-IN-ONE WALL SLEEVES KIT				
	<p>ALL-IN-ONE Standard Steel SnapEase Wall Sleeve, Subbase, Stamped Grille and Drain Kit in one carton.</p>	42	18	16

STEEL EXTENDED WALL SLEEVES**				
	<p>SLEEVE-EXT-16 16-in. Extended Metal Wall Sleeve for deep wall applications.</p>	42	16	16
	<p>SLEEVE-EXT-18 18-in. Extended Metal Wall Sleeve for deep wall applications.</p>	42	18	16
	<p>SLEEVE-EXT-20 20-in. Extended Metal Wall Sleeve for deep wall applications.</p>	42	20	16
	<p>SLEEVE-EXT-24 24-in. Extended Metal Wall Sleeve for deep wall applications.</p>	42	24	16

	PART NUMBER / DESCRIPTION	DIMENSIONS (IN.)		
		L	W	H
OTHER WALL SLEEVE ITEMS				
	<p>SLEEVE-EXT-FR</p> <p>Friedrich Wall Sleeve Extension for retrofit into Friedrich 11-1/2-in. deep wall sleeves (ZoneAire & Friedrich T-series).</p>	42	3	16
	<p>SLEEVE-EXT-2IN</p> <p>2-inch Wall Sleeve steel extension with insulation. Fits both steel and polymer wall sleeves.</p>	42	2	16
	<p>SLEEVE-MOLDING</p> <p>Wall Sleeve Molding Kit for trimming 42-in. x 16-in. wall sleeves to the interior wall.</p>	42-1/8	1	16-1/8



EXTERIOR GRILLES

POLYMER ARCHITECTURAL GRILLES		
	GRILLE-PLA-WHITE	Polymer Architectural Exterior Grille with Universal Fit* (WHITE).
	GRILLE-PLA-DOVE	Polymer Architectural Exterior Grille with Universal Fit* (SOFT DOVE).
	GRILLE-PLA-ALPIN	Polymer Architectural Exterior Grille with Universal Fit* (ALPINE).
	GRILLE-PLA-BEIGE	Polymer Architectural Exterior Grille with Universal Fit* (BEIGE).
	GRILLE-PLA-DBRNZ	Polymer Architectural Exterior Grille with Universal Fit* (DARK BRONZE/BROWN).


**The Universal Fit grilles are designed to mount to most manufacturers' wall sleeves.*

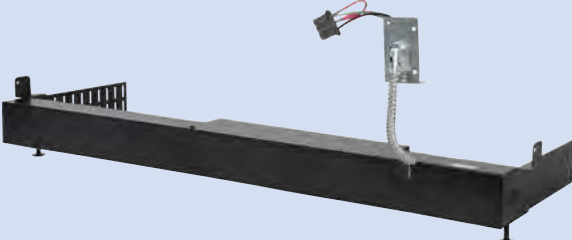
STAMPED ALUMINUM GRILLE		
	GRILLE-ALU-STAMP	Stamped Aluminum Exterior Grille (CLEAR FINISH).

ALUMINUM ARCHITECTURAL GRILLES

	GRILLE-ALU-CLEAR	Aluminum Architectural Exterior Grille with Universal Fit* (CLEAR FINISH).
	GRILLE-ALU-UWHITE	Aluminum Architectural Exterior Grille with Universal Fit* (ULTRA WHITE).
	GRILLE-ALU-WHITE	Aluminum Architectural Exterior Grille with Universal Fit* (ANTIQUÉ WHITE).
	GRILLE-ALU-DOVE	Aluminum Architectural Exterior Grille with Universal Fit* (SOFT DOVE).
	GRILLE-ALU-ALPIN	Aluminum Architectural Exterior Grille with Universal Fit* (ALPINE).
	GRILLE-ALU-BEIGE	Aluminum Architectural Exterior Grille with Universal Fit* (BEIGE).
	GRILLE-ALU-BRONZ	Aluminum Architectural Exterior Grille with Universal Fit* (LIGHT BRONZE).
	GRILLE-ALU-MBRNZ	Aluminum Architectural Exterior Grille with Universal Fit* (MEDIUM BRONZE).
	GRILLE-ALU-DBRNZ	Aluminum Architectural Exterior Grille with Universal Fit* (DARK BRONZE/BROWN).

SUBBASES

230V & 265V ELECTRICAL SUBBASE		PART NUMBER / DESCRIPTION
	SUBBASE-230V-15A 208/230V 15 amp, factory installed NEMA 6-15R receptacle.	
	SUBBASE-230V-20A 208/230V 20 amp, factory installed NEMA 6-20R receptacle.	
	SUBBASE-230V-30A 208/230V 30 amp, factory installed NEMA 6-30R receptacle.	
	SUBBASE-265V-15A 265V 15 amp, factory installed NEMA 7-15R receptacle.	
	SUBBASE-265V-20A 265V 20 amp, factory installed NEMA 7-20R receptacle.	
	SUBBASE-265V-30A 265V 30 amp, factory installed NEMA 7-30R receptacle.	

SUBBASE WITH HARDWIRE	
	SUBBASE-HW-230V-15A 208/230V 15 amp, factory installed unit connector.*
	SUBBASE-HW-230V-20A 208/230V 20 amp, factory installed unit connector.*
	SUBBASE-HW-230V-30A 208/230V 30 amp, factory installed unit connector.*
	SUBBASE-HW-265V-15A 265V 15 amp, factory installed unit connector.*
	SUBBASE-HW-265V-20A 265V 20 amp, factory installed unit connector.*
	SUBBASE-HW-265V-30A 265V 30 amp, factory installed unit connector.*

* Power connector designed for Gree ETAC models.

NON-ELECTRICAL SUBBASE	
	SUBBASE-NON-ELEC Non-Electrical provides mechanical support for the wall sleeve.

SUBBASE LEGS	
	LEVELING-LEGS Legs to provide mechanical support for the wall sleeve.

SUBBASE SWITCHES

SUBBASE DISCONNECT SWITCH

PART NUMBER / DESCRIPTION



SUBBASE-SWITCH-A

Field Installable DPST Switch Kit for 208/230V or 265V Electrical Subbase. 208/230V and 265 volts 30 amps max.

SUBBASE FUSE & SWITCH



SUBBASE-FUSE-15A

Field Installable fuse & switch kit for 15A 208/230V or 265V Electrical Subbase.

SUBBASE-FUSE-20A

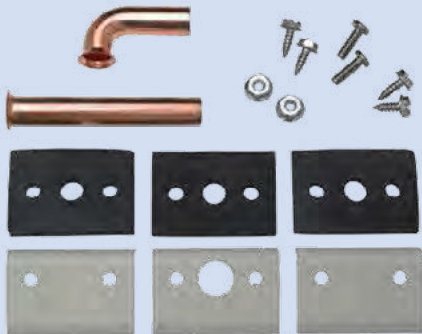
Field Installable fuse & switch kit for 20A 208/230V or 265V Electrical Subbase.

SUBBASE-FUSE-30A

Field Installable fuse & switch kit for 30A 208/230V or 265V Electrical Subbase.

CONDENSATE DRAIN KITS

PART NUMBER / DESCRIPTION



DRAIN-KIT-IPK


This universal drain kit may be used internally or externally to route condensate to the drainage system.

The kit includes both straight and right angle drain tubes with mounting brackets, seals and screws (1 per pack).




HARDWIRE KITS

HARDWIRE KITS WITHOUT UNIT CONNECTOR

	HARDWIRE-KIT-230V	208/230V permanent power connection to the unit with 36-inch flexible steel conduit and easy unit disconnect.
	HARDWIRE-KIT-265V	265V permanent power connection to the unit with 36-inch flexible steel conduit and easy unit disconnect.

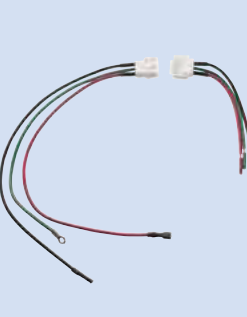
HARDWIRE KITS WITH UNIT CONNECTOR

	E2-HW-230V-15A E2-HW-265V-15A	Permanent Power Connection to the unit with 36-inch flexible steel conduit and unit-mounted power connector.* For applications requiring 15 amp service and 2.5 kW electric heat.
	E2-HW-230V-20A E2-HW-265V-20A	Permanent Power Connection to the unit with 36-inch flexible steel conduit and unit-mounted power connector.* For applications requiring 20 amp service and 3.5 kW electric heat.
	E2-HW-230V-30A E2-HW-265V-30A	Permanent Power Connection to the unit with 36-inch flexible steel conduit and unit-mounted power connector.* For applications requiring 30 amp service and 5 kW electric heat.

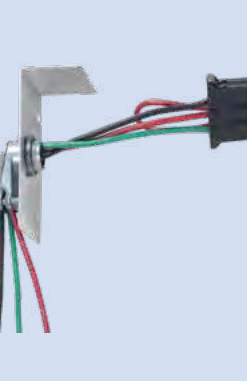
* Power connector designed for Gree ETAC models.

CONDUIT INTERFACE KITS

CONDUIT KITS WITHOUT UNIT CONNECTOR

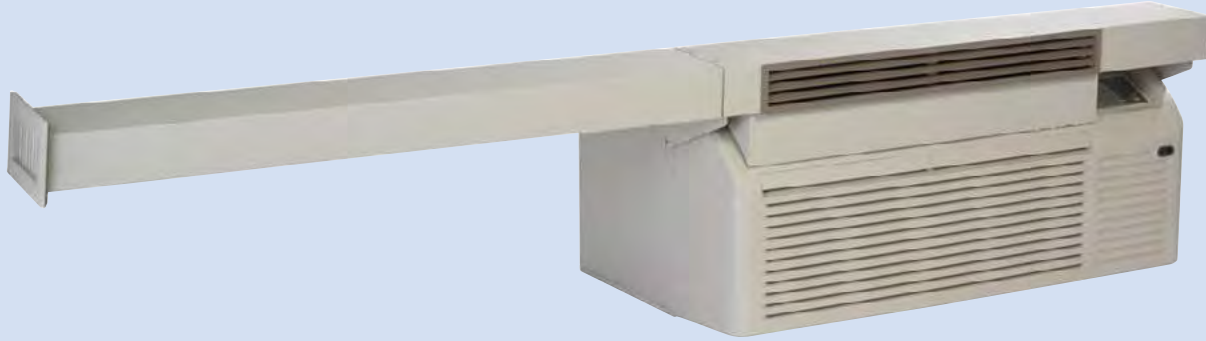
	CONDUIT-INTF-230V	208/230V Conduit Interface for connecting existing conduit power connection to a unit. Kit provides right angle conduit connector, easy unit disconnect and unit access cover. For use on 208/230V applications up to 30 amps.
	CONDUIT-INTF-265V	265V Conduit Interface for connecting existing conduit power connection to a unit. Kit provides right angle conduit connector, easy unit disconnect and unit access cover. For use on 265V applications up to 30 amps.

CONDUIT KITS WITH UNIT CONNECTOR

	E2-CI-230V-15A E2-CI-265V-15A	Conduit Interface for connecting existing conduit power connection* to a unit. For applications requiring 15 amp service and 2.5 kW electric heat.
	E2-CI-230V-20A E2-CI-265V-20A	Conduit Interface for connecting existing conduit power connection* to a unit. For applications requiring 20 amp service and 3.5 kW electric heat.
	E2-CI-230V-30A E2-CI-265V-30A	Conduit Interface for connecting existing conduit power connection* to a unit. For applications requiring 30 amp service and 5 kW electric heat.

* Power connector designed for Gree ETAC models.

LATERAL DUCT SYSTEM



LATERAL-DUCT

Lateral Duct System allows one unit to heat/cool two rooms. Includes Plenum, 4-ft. Extension Duct, Trim Kit and Registers.

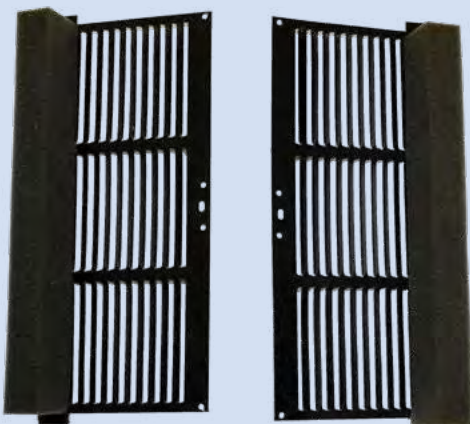
PTAC AIR DEFLECTOR



PTAC-DEFLECTOR-A

Discharge Air Deflector for PTACs to direct air flow away from curtains. Fits all PTAC models. 30 X 4-1/2 in.

BAFFLE KIT



BAFFLE-KIT-IPK

The Baffle Kit contains air deflectors and gaskets that mount to the outdoor coil to redirect air and avoid re-circulation.

VERTICAL ACCESSORIES

WALL SLEEVE/PLENUM



SLEEVE-VTAC-8

Telescopic steel wall sleeve can be field adjusted from 5 1/2" to 8" in depth. The wall plenum provides an air tight interior unit gasket and accepts an exterior mounted grille.

30 3/8" x 24 1/8"
(Alpine Beige)

ARCHITECTURAL GRILLE



GRILLE-VTAC-CLEAR

Aluminum Architectural Exterior Grille

25-1/2" x 31"
(Clear Finish)

RETURN AIR GRILLE



GRILLE-RETURN-A

Return air grille is designed to be installed in a common wall to closet. This grille is made of durable steel and accepts a 20" x 20" x 1" field supplied air filter.

22-1/2" x 22-1/2"
(Alpine Beige)

ACCESS PANEL



PANEL-VTAC-A

Large steel access panel with built-in return air grille provides access to air handlers and other types of closet mounted air conditioners. It accepts a 25" x 20" x 2" field supplied air filter.

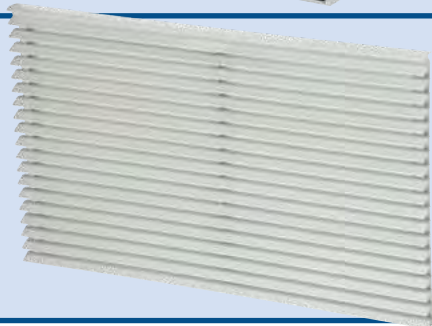
58" x 29"
(Alpine Beige)

24 INCH TTW ACCESSORIES



SLEEVE-TTW-24

Through-The-Wall (TTW) snap together heavy duty steel wall sleeve. 25-1/2 in. (L) x 15-1/4 in. (H) x 17-1/2 in. (D).



GRILLE-TTW-24-CLEAR

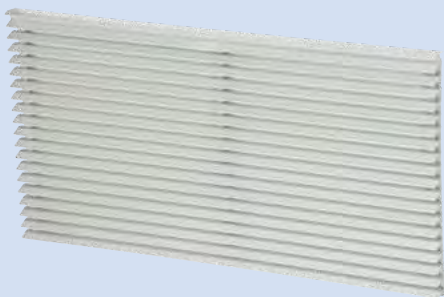
Aluminum Architectural Exterior Grille. 25-1/2 in. (L) x 15-1/4 in. (H) (Clear Finish).

26 INCH TTW ACCESSORIES



SLEEVE-TTW-26

Through-The-Wall (TTW) snap together heavy duty steel wall sleeve factory installed insulation. 26 in. (L) x 15-5/8 in. (H) x 16 in. (D).



GRILLE-TTW-26-CLEAR

Aluminum Architectural Exterior Grille. 26 in. (L) x 15-5/8 in. (H) (Clear Finish).



GRILLE-TTW-26-STAMP

Stamped Aluminum Exterior Grille. 26 in. (L) x 15-5/8 in. (H) (Clear Finish).

DUCTFREE

WIND BAFFLES



WIND-BAFFLE-A

Ductfree Mini-Split Low Ambient Wind Baffle
20 x 20 x 8 in.
(W x H x D).

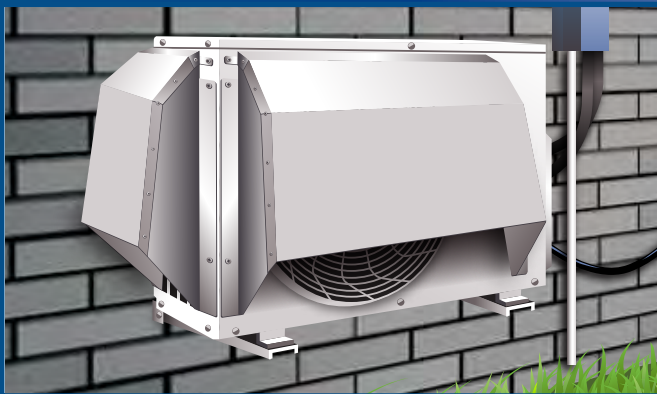
WIND-BAFFLE-B

Ductfree Mini-Split Low Ambient Wind Baffle
23-1/2 x 23-1/2 x 8 in.
(W x H x D).

WIND-BAFFLE-C

Ductfree Mini-Split Low Ambient Wind Baffle
21 x 20-1/2 x 8 in.
(W x H x D).

SNOW HOOD & HAIL GUARD



SNOW-HOOD-A

Hood Protection Kit for DFS outdoor condenser unit. Side and rear intake hoods protect coil from damaging hail and prevent snow build up.

MERV 13 FILTER BOXES



DFS-FB-12

Steel filter box designed for 9,000 and 12,000 BTU concealed duct mini split indoor units. It accepts 2-inch MERV 13 pleated filter. Air filters not included.



DFS-FB-24

Steel filter box designed for 18,000 and 24,000 BTU concealed duct mini split indoor units. It accepts two 2-inch MERV 13 pleated filter. Air filters not included.



**FIRST
AMERICA**

PROVEN PRODUCTS FOR THE HVAC INDUSTRY

**First America Products
153 Industrial Loop South
Orange Park, Florida 32073
www.firstamericaproducts.com**

**800.513.1152 Toll Free
800.760.0715 Fax**

sales@firstamericaproducts.com

Specifications are subject to change without notice.
Manufacturer reserves the right to discontinue or
change at any time, specifications or designs
without notice or without incurring obligations.

© 2023 First America Products LLC All Rights Reserved

Cat.No. 1013 Version 1.0